

PEST ALERT!

SQUASH BUG

Anasa tristis

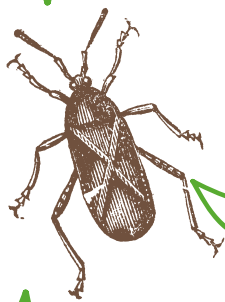
WHERE

LEAVES
AND STEMS

I damage plants by turning their leaves yellow-brown and disrupting their water flow, causing plants to wilt.

HOW

BY SUCKING
LEAF SAP



I suck the sap out of leaves and stems with my piercing-sucking mouthparts.

WHEN

SPRING,
SUMMER,
AND FALL

In the winter, I seek shelter and hide until spring. As temperatures warm, I fly to a squash plant and lay my eggs.

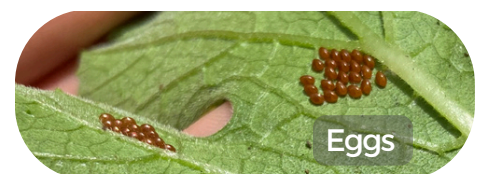
Adult squash bug laying eggs



Squash bug leaf damage on squash leaf



Severe squash bug damage on zucchini leaves



Eggs



Nymphs



Nymphs

WHAT SHOULD YOU DO?

- Scout for **egg clusters** and crush them.
- Consider using **insect netting** to cover and protect young plants. Remove the netting when the plants start to flower- this allows for pollination.
- Spray nymphs directly with **neem oil** to disrupt their life cycle.



Adult

PLANTS TO WATCH

ZUCCHINI, SQUASH, PUMPKINS, MELONS, GOURDS, and **CUCUMBERS** are loved by squash bugs.